



## Portable Window & Door Test Equipment

### Model: AW-1000.6 Air-Water Test Kit



Shown with optional Manual Control Module

#### 6th Generation AW-1000 \*

- Extended capacity (larger blower)
- Extended pressure monitoring range
- Improved accuracy / stability
- Improved cable and hose management
- Increased reliability
- Increased flow range (40 CFM)

\* Improvements made since 1st Gen

#### Model: AW-1000.6 - Key Features:

- **Automated** "plug-n-play" PC control. User-friendly software controls the AW-1000 using a standard USB port - software includes test reporting features
- **Operation Mode:** Automated (USB computer interface) included with base system. Upgrade with Manual Mode control (computer not required)
- **Laminar Flow Element (LFE)** for precise airflow measurements (infiltration and exfiltration)
- **Medical grade** high flow blower (reliable and quiet)
- **On-Board Color Display** (Works in Manual Mode): Airflow (CFM or L/s) and Test Pressure (PSF or Pa)
- **Spare Power outlet** is built-in for computer charging
- **Organized Storage:** 6' Hose, 10' Power Cord, USB cable & Interface Plate neatly stores in lid
- **Versatile** : Laboratory & Field Certification, R&D and in-line QC Testing

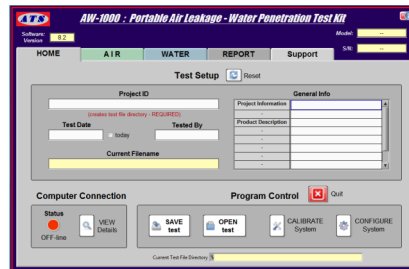
All systems include: Verification Document, Software, Operation Manual & Technical Support

- **OPTION:** Environmental Upgrade - Temperature, humidity and barometric pressure data collected and airflow measurements corrected when computer controlled mode
- **OPTION:** Manual Control Module. Includes a On-Board Color Display reading Airflow (CFM or L/s) and Test Pressure (PSF or Pa), Manual blower speed dial and toggle switch.
- **OPTION:** Blower Pack (BP-1000) -This booster pack can be remote controlled by the AW-1000 or manually operated as a stand-alone to double the blower.
- **OPTION:** Additional extended length hoses and pressure monitoring ports



#### Portable

- Wide track wheels
- Retractable pull handle



#### PC Controlled Software

- USB interface
- User-friendly
- Report generation

#### Other Products and Services:

- Air-Water-Structural Systems
- Rapid Cycling Systems
- Test Wall Systems
- Spray Rack Systems (mobile / stackable)
- Deflection Measurement Systems (digital / analog)
- Water Recycling Systems
- Impact Cannons (Dade / FEMA)
- Hurricane Cycling Systems
- Calibration Systems
- Acoustical Test Systems
- Thermal Test Systems
- Custom Test Systems
- Retrofit existing equipment

#### Mission Statement:

*"To design and manufacture high quality, cost effective, user-friendly test equipment - delivered with integrity."*

**ATS**  
Automated Testing Solutions, Inc.

3520 88th Avenue NE  
Circle Pines, MN 55014-4106

Contact ATS for pricing, product specifications and availability:

Phone: (763) 784-1775  
www.ATS-equipment.com